

Reflectys

Anterior and posterior nanohybrid
light-cured composite material



Advantages

- True reflection of natural teeth, true **mimesis**, exceptional aesthetic properties
- **Invisible restoration**, perfect integration of the composite. Joints cannot be seen
- Exceptional **aesthetic quality after polishing**
- **Low polymerization shrinkage**: better marginal adaptation
- **Easy handling** of the material: ideal texture, does not stick to instruments or gloves, easy to sculpt and quick to polish
- Remarkable **mechanical resistance**: enriched with micro- and nano-particles, abrasive resistance for durable restorations
- No post-operative sensitivity
- **Radiopacity** equivalent to 220% of Aluminium
- **Light-curing**
- Supplied in **syringe format** or in **capsules**
- 16 shades available

Indications

Reflectys

Universal composite

Restoration of both anterior and posterior teeth

- All classes (I to V)
- Fractured teeth
- Restoration of milk teeth

Reflectys Flow

- Filling of minor invasive preparations with carious lesions
- Surface fillings of Class I, III and V
- Liners combined with high viscosity composite materials
- Marginal repairs to current composite fillings or inlays
- Repairs of bis-acrylic crowns and bridges
- Pit and fissure sealant
- Cementation of transparent orthodontic brackets and retainers
- Reinforcement of teeth after traumatic event or with weakened periodont

Clinical Excellence

ITENA[®]
CLINICAL PRODUCTS

Clinical case study



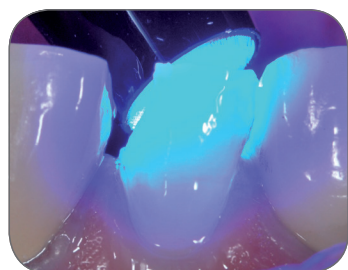
① Pre-operative view showing substance loss



② Full etching using DentoEtch 37% phosphoric acid



③ Application of Iperbond Ultra enamel-dentine adhesive



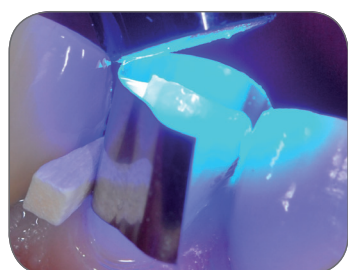
④ Light-curing of the adhesive for a period of 20s



⑤ Placement of a matrix and wooden interdental wedge to ensure good mesial contact



⑥ Application of an opaque shade of Reflectys composite (eg. shade A3O) to the palatal side, then after light-curing, application of a normal translucent shade of Reflectys (eg. shade A3)



⑦ Light-curing of the composite for a period of 20s



⑧ View of the raw composite material after removal of the matrix



⑨ Final view after polishing with Perfect Polish silicone discs

REFERENCES

Reflectys

Shade	4g syringe + 1 spatula	20 x 0.25g capsules + 1 spatula
A1	SRTYS-A1	CPTYS-A1
A2	SRTYS-A2	CPTYS-A2
A3	SRTYS-A3	CPTYS-A3
A3.5	SRTYS-A3.5	CPTYS-A3.5
A4	SRTYS-A4	CPTYS-A4
B1	SRTYS-B1	CPTYS-B1
B2	SRTYS-B2	CPTYS-B2
B3	SRTYS-B3	CPTYS-B3
C2	SRTYS-C2	CPTYS-C2
C3	SRTYS-C3	CPTYS-C3
D3	SRTYS-D3	CPTYS-D3
A2 Opaque	SRTYS-A20	CPTYS-A20
A3 Opaque	SRTYS-A30	CPTYS-A30
I	SRTYS-I	CPTYS-I
P	SRTYS-P	CPTYS-P
E	SRTYS-E	CPTYS-E

Reflectys Flow

Shade	2g syringe + 10 tips ø 0.9 mm
A1	FWTYS-A1
A2	FWTYS-A2
A3	FWTYS-A3
A3.5	FWTYS-A3.5
B2	FWTYS-B2
B3	FWTYS-B3

Reflectys Kits

Reflectys Syringe Intro Kit
4 Reflectys syringes (A2, A3, A3.5, B2) + 2 Reflectys Flow syringes (A2, A3.5) with 10 tips + 1 DentoEtch syringe with 10 needle tips + Spherical micro-brushes + 1 Iperbond Ultra + 1 set of 6 Perfect Polish discs (2 of each type) + 1 spatula

KTY-SR

Reflectys capsules Intro Kit
4 Reflectys capsules (20xA2, 20xA3, 20xA3.5, 20xB2) + 2 Reflectys Flow syringes (A2, A3.5) with 10 tips + 1 DentoEtch syringe with 10 needle tips + Spherical micro-brushes + 1 Iperbond Ultra + 1 set of 6 Perfect Polish discs (2 of each type) + 1 spatula

KTY-CP

Reflectys Integral Kit
16 Reflectys syringes (A1, A2, A3, A3.5, A4, B1, B2, B3, C2, C3, D3, A20, A30, I, P, E) + 6 Reflectys Flow syringes (A1, A2, A3, A3.5, B2, B3) with 20 tips + 2 DentoEtch syringes with 20 needle tips + Spherical micro-brushes + 1 Iperbond Ultra + 1 set of 12 Perfect Polish discs (4 of each type) + 1 spatula

KTY-S-I

TECHNICAL DATA

PROPERTIES	REFLECTYS	REFLECTYS FLOW
Layer - Advised curing time 20s (LED)	2.5 mm	2.5 mm
Depth of cure	2.95 mm	3.18 mm
Compressive strength	380 MPa	250 MPa
Flexural strength	170 MPa	140 MPa
Flexural modulus	9110 MPa	-
Film thickness	8.2 µm	-
Water sorption	13.66 µg/mm ³	14 µg/mm ³
Solubility	0.56 µg/mm ³	0.64 µg/mm ³
Volume shrinkage	2.37%	-
Radiopacity	220% of Al	220% of Al

Shades :

A1, A2, A3, A3.5, A4, B1, B2, B3, C2, C3, D3	"Universal" shades with intermediary translucencies. Shades are defined according to the Vita standards
A20, A30	Opaque shades with a very low translucency, used to block colors (Dentine)
E	Enamel, very High Translucency, used to reproduce the enamel layer with Opaque shade, if necessary
I	Incisal, very translucency, recommended for the restoration of incisive and for areas requiring translucency
P	Pedo, very light shade recommended for milk teeth